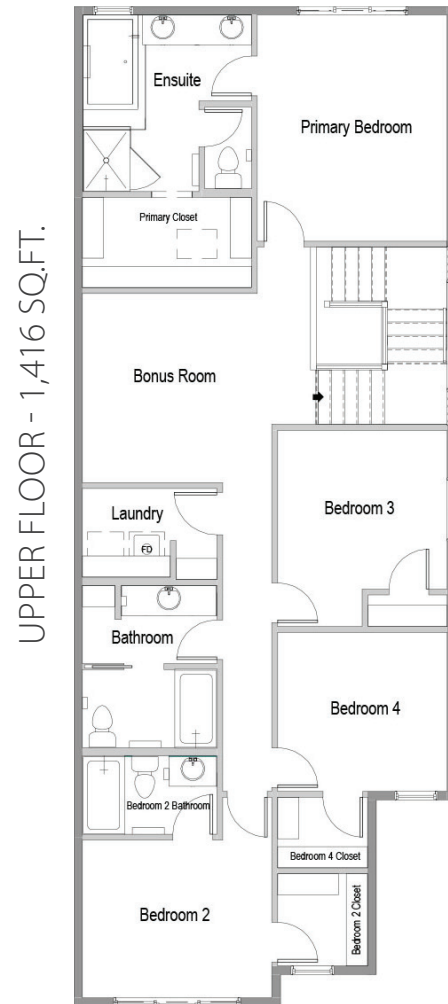
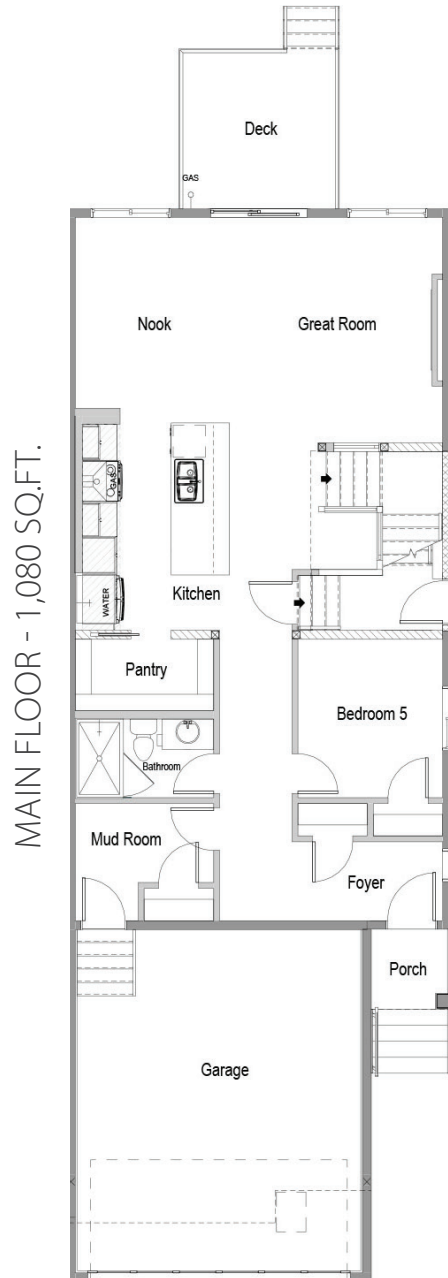


EMPRESS SSY 24

49 BELMONT ROW SW

2,496 SQ. FT. / 5 BEDS / 4 BATHS



Celebrating 45 years of homebuilding excellence

INTERIOR SELECTIONS

This interior selections palette evokes warmth and modern sophistication through a harmonious blend of textures and tones. Golden undertoned luxury vinyl plank flooring lays a cozy foundation, while terrazzo-inspired LVT adds depth and grounds the space with subtle warmth. The wave-like kitchen backsplash, rich in high-variance color, introduces movement and visual intrigue. Two-tone cabinetry—featuring warm prefinished wood and bright white textured slab doors—strikes a balance between comfort and contemporary style, all anchored by sleek ¾” engineered stone surfaces for a refined finish



ANDREA CARPINTERO
DESIGN CONSULTANT



SCAN FOR A VIDEO SHOWCASING THE INTERIOR SELECTIONS INCLUDED IN THIS HOME.



CEDARGLENHOMES.COM



BELMONT

Veronica Zhivov, Area Sales Manager
27 Belmont Place SW
403-257-5801

Veronica.Zhivov@cedarglenhomes.com

Cedarglen Homes retains all rights and interest to this document, in whole or in part, including reproduction. Floorplans, exterior elevation details and interior selections may not be exactly as shown and this document may change without notice or obligation. In case of a dispute, the contract prevails. Effective 02/11/2026. E&OE.