

QUICK  
POSSESSION

# THE SASHA

1,523 SQ FT | 3 BED | 2.5 BATH

20560 SHERIFF KING STREET SW



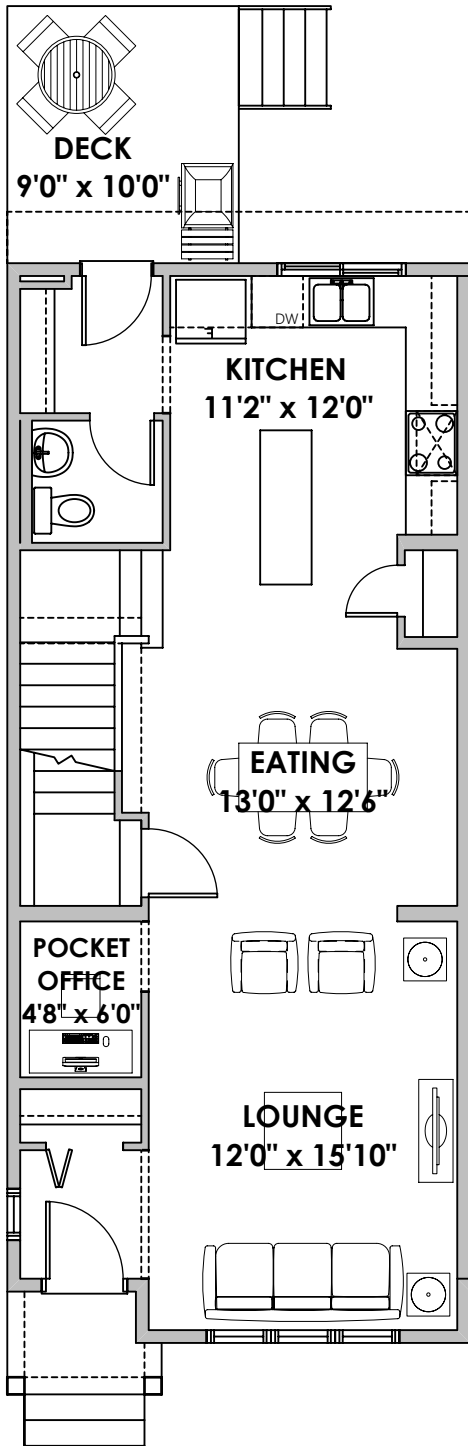
## THIS STREET TOWN HOME FEATURES

- No condo fees
- End unit
- Quartz countertops throughout
- Upgraded ensuite shower
- Stainless steel kitchen appliances, chimney hood fan
- Main floor pocket office
- Upper floor bonus room/loft

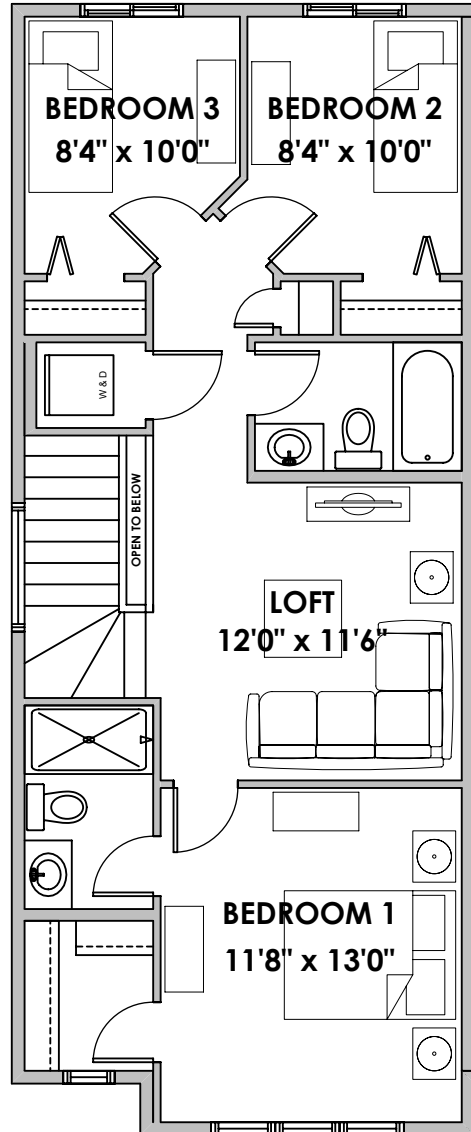
BETTER VALUE BY DESIGN  
SINCE 1978 | HOMESBYAVI.COM

Homes by **AVI**

# FLOOR PLAN



**MAIN**  
746 SQ FT



**UPPER**  
777 SQ FT

For more information or to book an appointment please contact us at **403.536.7204**

Prices are subject to change without notice. Actual floor plan, elevation, and square footage may not be exactly as shown. Square footage is measured to Alberta Building Code (ABC) regulations. Builder reserves the right to make changes without notice. E&OE.

Homes by **AVI**